

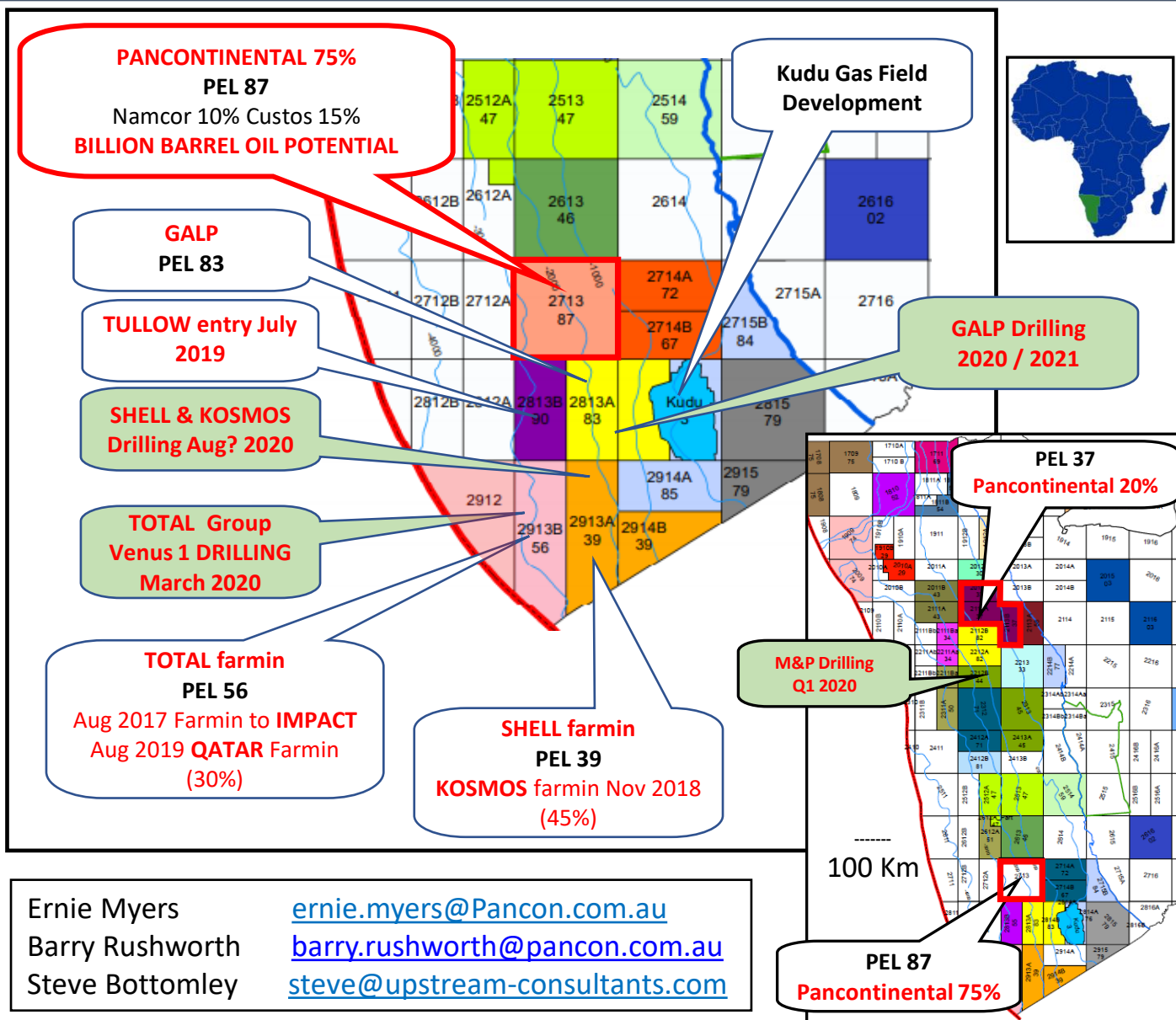
PANCONTINENTAL OIL & GAS

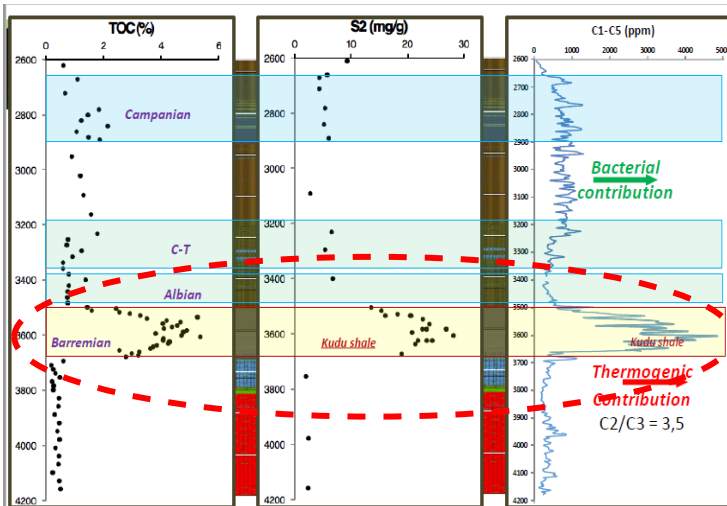
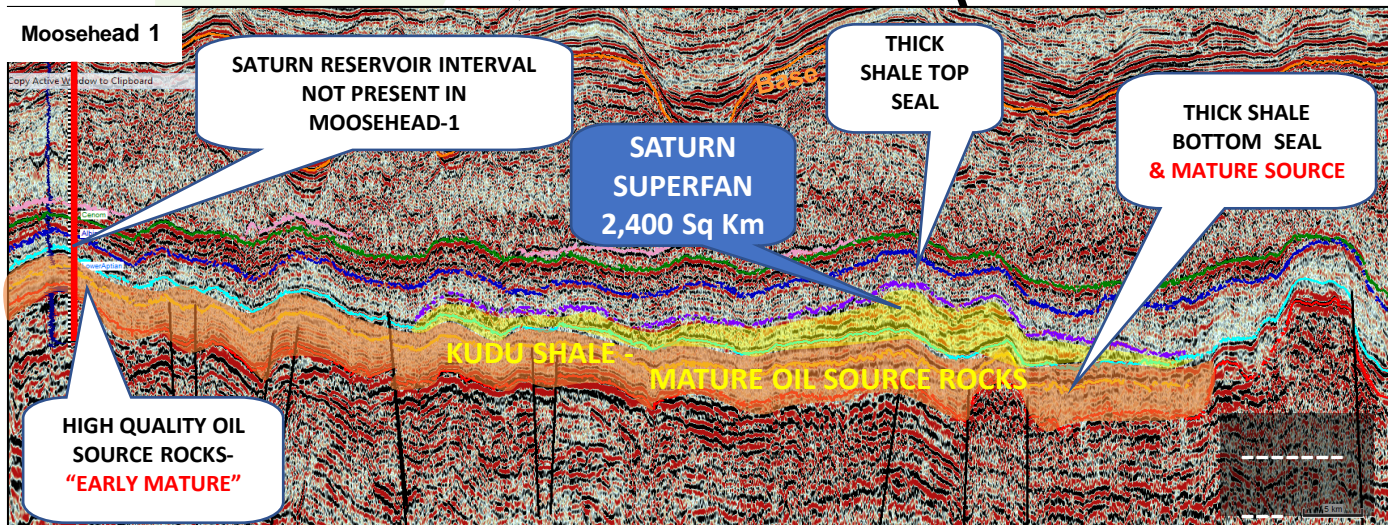
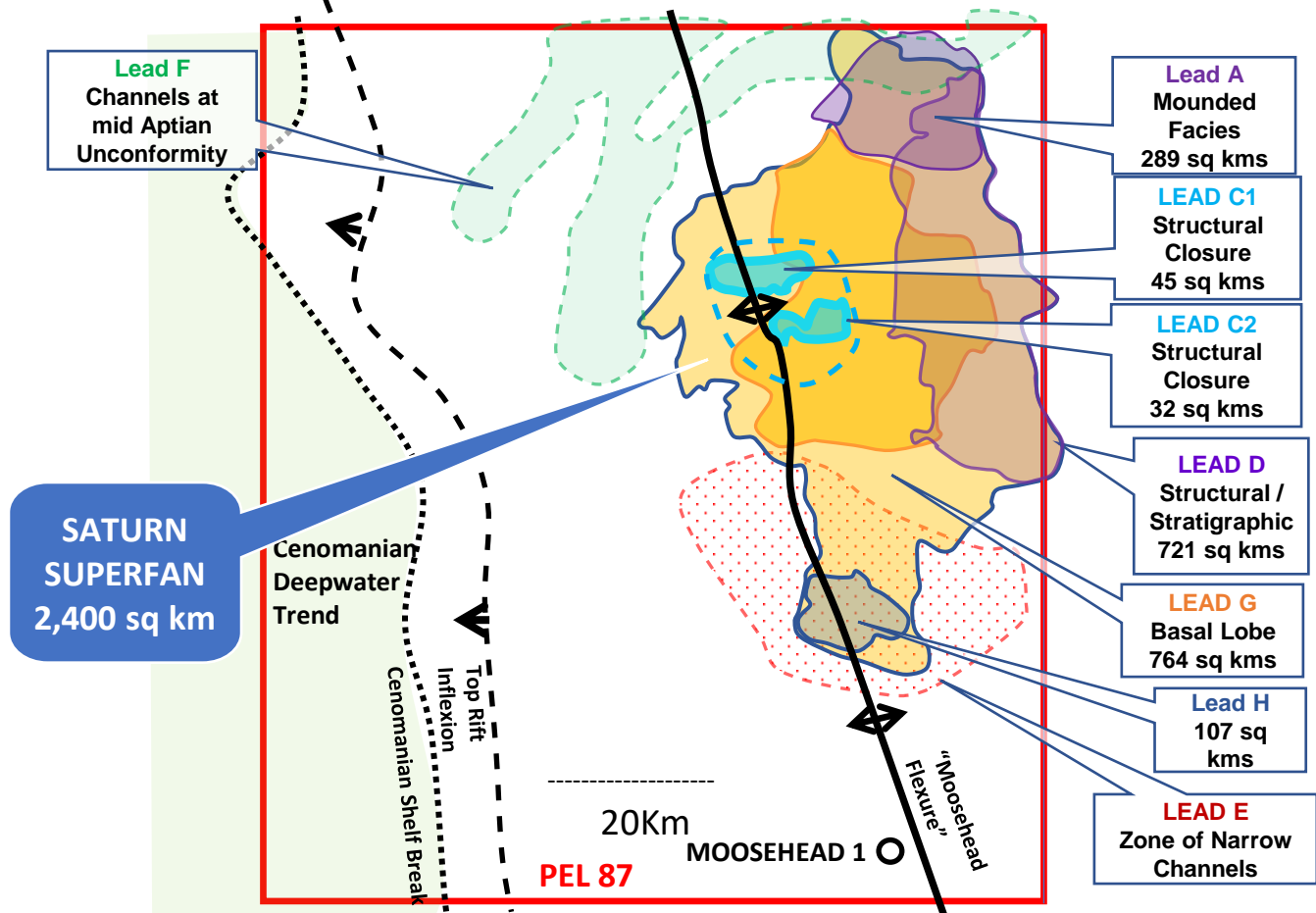
OFFSHORE NAMIBIA PEL 87



TRUE GIANT SCALE OIL POTENTIAL

- * **2,400 SQ KM TURBIDITE COMPLEX on MATURE OIL SOURCE**
- * **MAJOR EXPLORATION TREND (SHELL, TOTAL, KOSMOS etc)**
- **ON-TREND DRILLING 2020**
- * **10,947 SQ KM BLOCK, OFFSHORE ORANGE BASIN**
- **PANCONTINENTAL 75%, OPERATOR**
- **“Saturn” mid-Albian clastic target mapped on 2D**
- **Requires 4000-5000 sq.km 3D Farmin term negotiable**





1 main source-rocks: Barremian (Kudu Shale): Marine oil-prone, H₁=600, beginning of oil window
(but gas associated with high maturity => deeper source and vertical migration?)

Moosehead

PEL 87

* Saturn Complex - 2,400 sq.km

• **2.8 Billion Bbls Oil Potential**
Independently assessed
(P_{mean}, Recoverable)

* Basin-floor turbidite complex

* On top of mature oil source

* Regional top seal

* Independent closures

* Pancontinental 75%, Operator